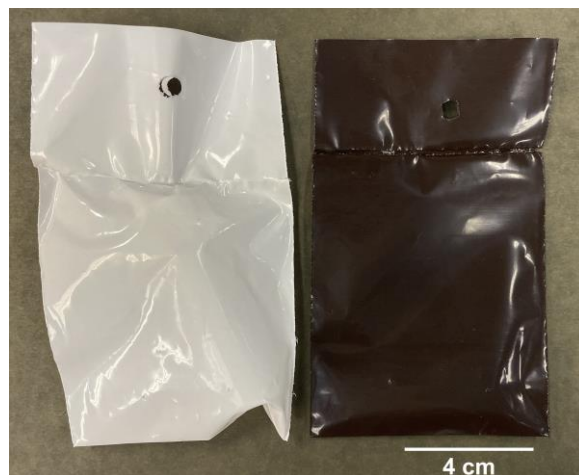


# Southwestern Pine Beetle *Dendroctonus barberi* Synergy Semiochemicals Lure (#3151)

The Synergy Western Pine Beetle combo lure (#3151) contains:

- A) Frontalin CT  
→comes in a brown bag with B
- B) Endo-brevicommin CT
- C) (+) Alpha-pinene bottle  
→comes in a white bag



Used for *Dendroctonus barberi*, formerly the eastern population of Western pine beetle. Effective from Nevada east to Colorado, Arizona and Mexico.

Field Life: Contents slowly release through the plastic pouches and last approximately **90 days @ 20° C**.

Storage: Stored un-used lures in a freezer.

Lure Hanging: Thread twist-tie (provided) through the hole-punch near the top of the bags. Tether components together to the outside of the trap. We recommend tethering the lures toward the bottom third of the trap.

**Important Note! Do NOT open pouches or puncture any of the plastic bubbles.** These pouches are part of the controlled release system and protect the lure's active ingredients from the outside elements.

Safety and Disposal: Components are generally non-toxic chemicals with little risk in handling them. However, users should use gloves or wash their hands after handling and keep lures out of reach from children and pets. Spent lures may be disposed of in normal trash.

General Info: This is a funnel lure used to attract the beetles. Traps are used as part of a monitoring or Integrated Pest Management strategy.

**Synergy Semiochemicals Corp.**

1-604-454-1122 | [www.semiochemical.com](http://www.semiochemical.com) | [synergy@semiochemical.com](mailto:synergy@semiochemical.com)

