

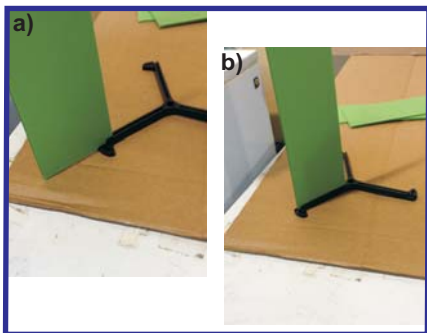
# Synergy Multitrap - Panel Trap Assembly instructions



Trap Parts



Complete Trap



1. Insert first panel and slide completely into Y brace.



2. Flip and insert other side.



3. Insert second panel half way. Flip and repeat.



4. Shimmy both sides until completely inserted.



5. Repeat steps 3 and 4 for third panel.



6. Make sure panel is flush with top of Y brace.



7. Use screw to connect panel with brace.



8. Fasten all 6 screws (stopping when sharp end of screw is flush with brace).



**Synergy Semiochemicals Corp.**  
[www.semiochemical.com](http://www.semiochemical.com)

# Synergy Multitrap - Panel Trap Assembly instructions



9. Push plastic connector into bottom side of canopy having tab facing outward.



10. Continue placing connectors in all the left openings.



11. Connect canopy to panel configuration.



12. Pull tight to ensure connected.



13. Push connector on left opening in funnel (tab facing outward).



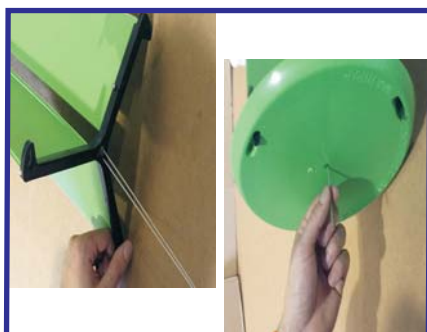
14. Repeat step 11 making sure all are on same side of hole.



15. Place collection cup in funnel from top to bottom.



16. Place washer on wire.



17. Insert wire through bottom of brace and continue wire to top of canopy.



18. Connect funnel to bottom of panels.



**Synergy Semiochemicals Corp.**  
[www.semiochemical.com](http://www.semiochemical.com)